

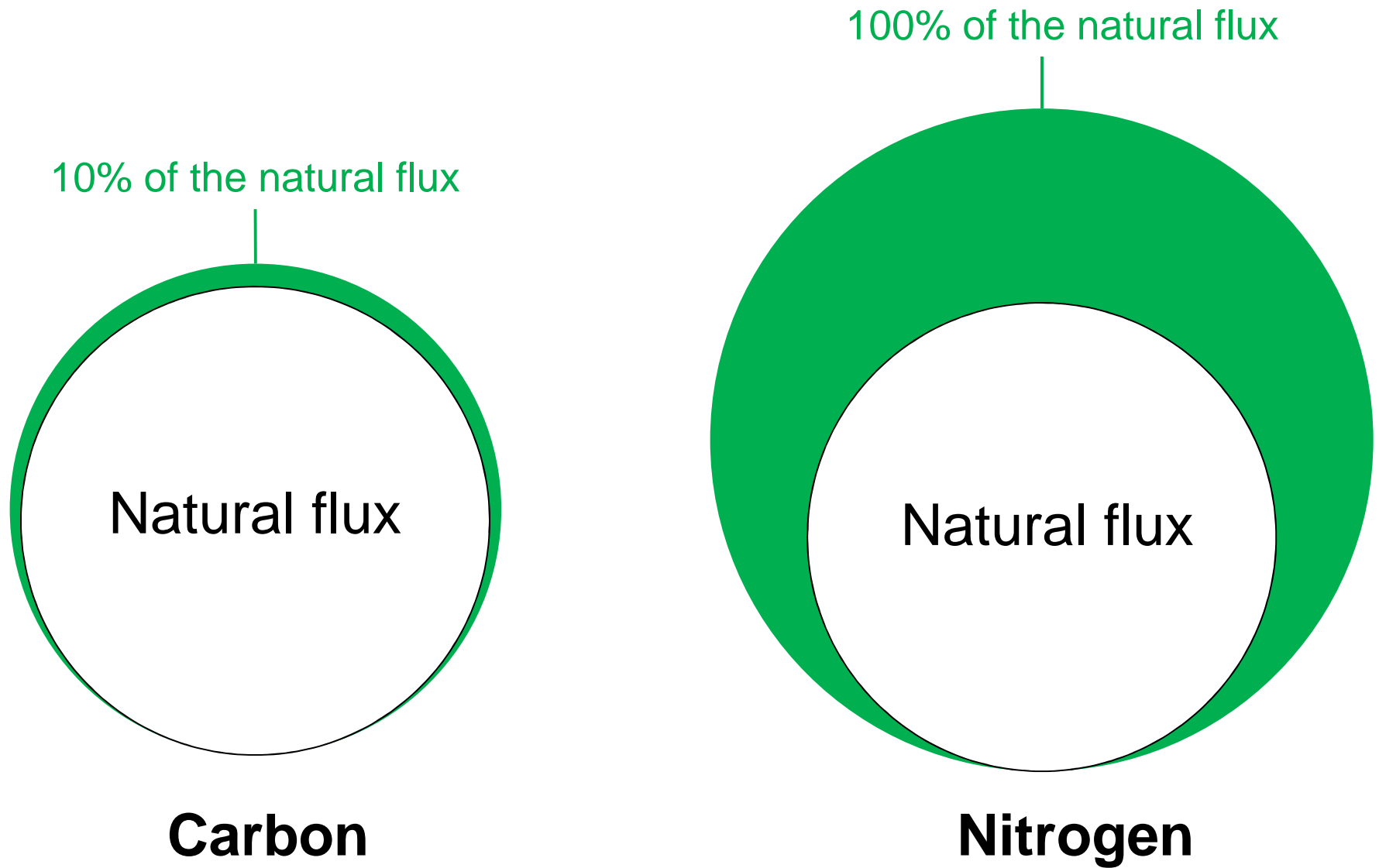
An aerial photograph of a dense, vibrant green forest. A prominent, dark green ridge runs diagonally across the center of the image, separating two slightly elevated areas of forest. The overall scene is a lush, natural landscape.

Assessing the use of different policy instruments to manage the unwanted release of nitrogen

Simon Upton, Environment Director, OECD

**7th International Nitrogen Initiative Conference
8 December 2016, Melbourne, Australia**

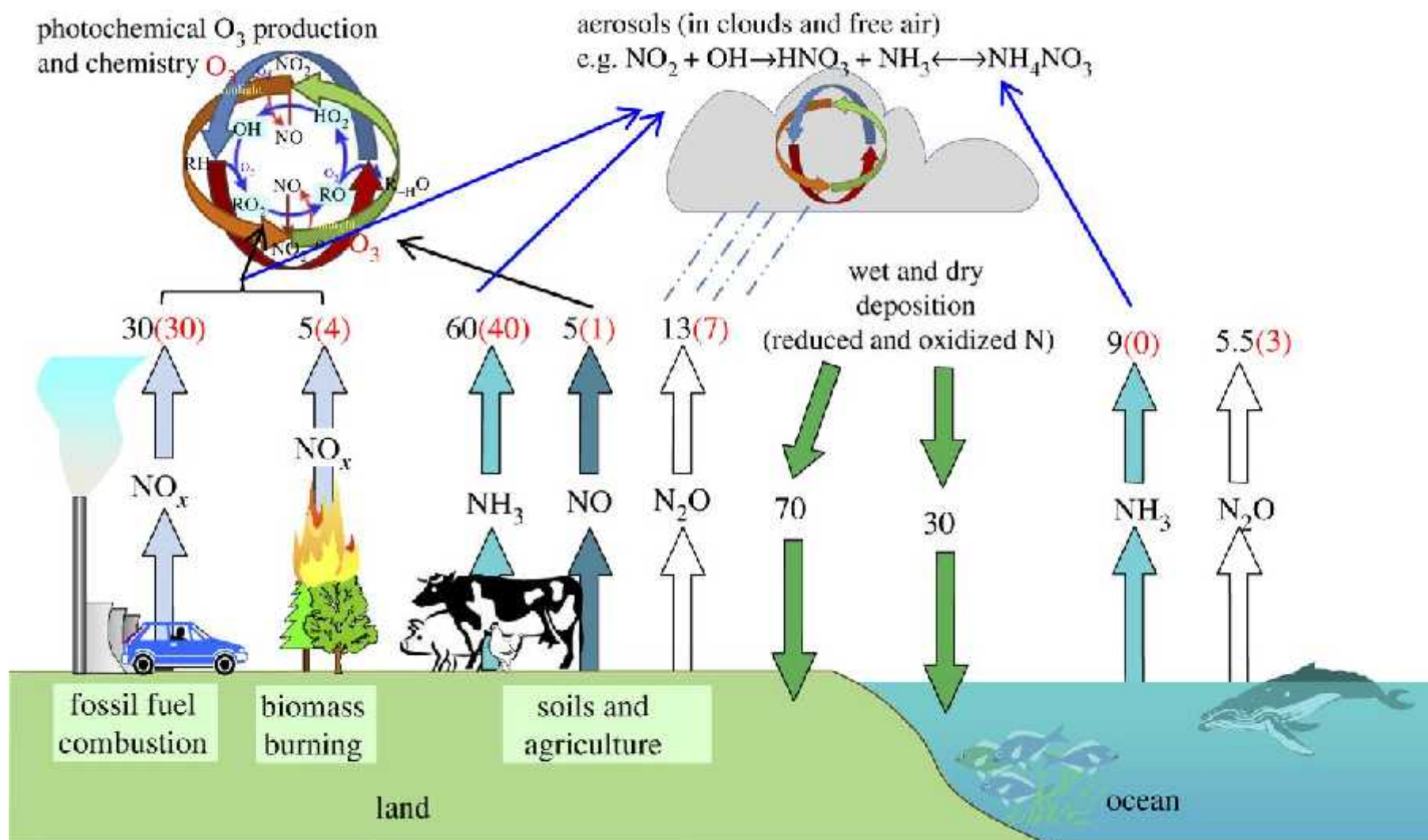
Human alterations to carbon and nitrogen natural fluxes



Source: Fowler et al. (2013) & Prentice et al. (2015)

 Anthropogenic input

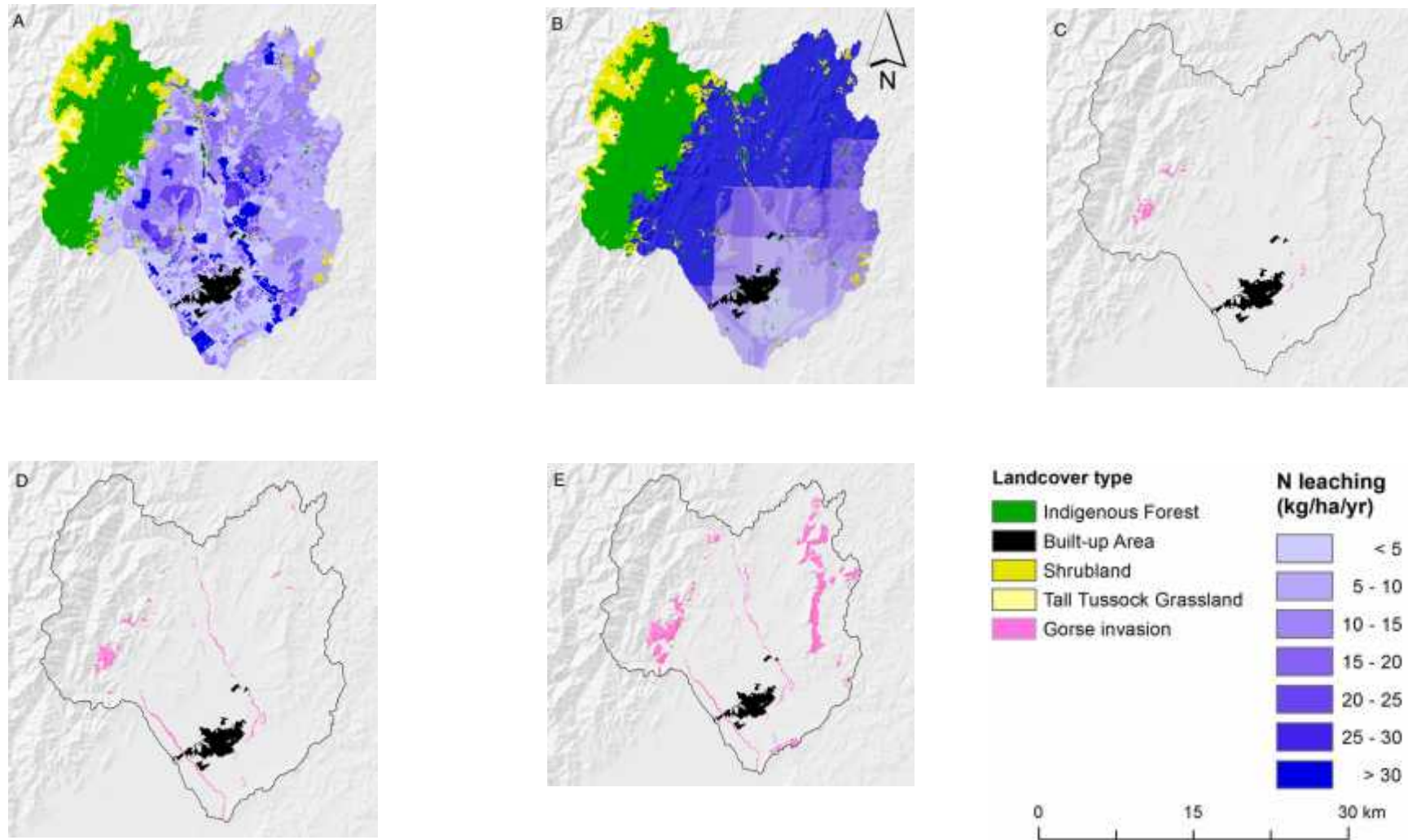
The global atmospheric processing of reactive nitrogen, illustrating the main sources, the main chemical pathways and products and the magnitudes of the fluxes (units Tg yr⁻¹).



Source: Fowler et al. (2013)

© 2013 The Author(s) Published by the Royal Society. All rights reserved.

Nitrogen leaching from gorse



Source: Mason et al. (2016)

Impact of “green” vehicle tax on pollution

- Average (per car) emissions from new registered passenger cars in Israel, 2009-14

Average emission level (g/km)						
Year	New registrations	CO ₂	HC	PM	NO _x	CO
2009	169,426	178	0.049	0.00053	0.028	0.351
2010	209,185	170	0.047	0.00066	0.025	0.337
2011	216,068	160	0.043	0.00049	0.022	0.356
2012	198,271	152	0.042	0.00024	0.024	0.363
2013	206,075	144	0.038	0.0002	0.024	0.344
2014	235269	140	0.037	0.00029	0.021	0.338
% change (2009-14)	39%	-21%	-24%	-45%	-25%	-4%

Lake Taupo, New Zealand



Variations in nitrogen use efficiency



Source: Zhang et al. (2015)

Thank you!

Simon.UPTON@oecd.org

www.oecd.org/environment



References

- Fowler, D., et al. (2013), “The global nitrogen cycle in the twenty-first century.” *Philosophical Transactions of the Royal Society B*. <http://dx.doi.org/10.1098/rstb.2013.0164>
- Mason, N.W.H., Mudge, P.L., Palmer, D., McLeod, M., Ausseil, A-G & J. Dymond (2016) “Catchment-scale contribution of invasive nitrogen fixing shrubs to nitrate leaching: a scoping study”, *Journal of the Royal Society of New Zealand*, 46:2, 85-102. <http://dx.doi.org/10.1080/03036758.2015.1127261>
- OECD (2016), “ Israel’s Green Tax on Cars: Lessons in Environmental Policy Reform”, *OECD Environment Policy Papers*, No. 5, OECD Publishing, Paris. <http://dx.doi.org/10.1787/5jlv5rmnq9wg-en>
- Prentice, I.C., Williams, S. & Friedlingstein (2015) “Biosphere feedbacks and climate change”, *Grantham Institute Briefing paper No. 12*. <http://www.imperial.ac.uk/media/imperial-college/grantham-institute/public/publications/briefing-papers/Biosphere-feedbacks-and-climate-change-Briefing-Paper-No-12v2.pdf>
- Zhang X., Davidson E.A., Mauzerall D.L., Searchinger T.D., Dumas P. & Y. Shen (2015), “Managing nitrogen for sustainable development”, *Nature*, vol. 528, pp. 51-59. <http://dx.doi.org/10.1038/nature15743>
- Lake Taupo photo: www.co.nz